

# Consulting Services for Environmental Flows Assessment and Water Quality Modelling within the Lesotho Lowlands Water Development Project Phase II (LLWDP II) Monthly Progress Report, May 2021

Ministry of Water, Lesotho



June 14<sup>th</sup>, 2021

Prepared by

**Multiconsult**

**Deltares**  
Enabling Delta Life



**Multi - Nodal**  
Development Consultants

This report has been prepared by Multiconsult and his partners on behalf of Multiconsult or its client. The client's rights to the report are regulated in the relevant assignment agreement. If the client provides access to the report to third parties in accordance with the assignment agreement, the third parties do not have other or more extensive rights than the rights derived from the client's rights. Any use of the report (or any part thereof) for other purposes, in other ways or by other persons or entities than those agreed or approved in writing by Multiconsult is prohibited, and Multiconsult accepts no liability for any such use. Parts of the report are protected by intellectual property rights and/or proprietary rights. Copying, distributing, amending, processing or other use of the report is not permitted without the prior written consent from Multiconsult or other holder of such rights.

## REPORT

PROJECT	<b>Consulting Services for Environmental Flow Assessment (EFA) and Water Quality Modelling within the Lesotho Lowlands Water Development Project Phase II (LLWDP II)</b>	DOCUMENT CODE	10223685-TVF-MPR-005
SUBJECT	Monthly Progress Report, May 2021	ACCESSIBILITY	Restricted
CLIENT	<b>Ministry of Water, Lesotho</b>	PROJECT MANAGER	Leif Birger Lillehammer
CONTACT	Nthame Monare	EDITED BY	Leif Birger Lillehammer
		PREPARED BY	Leif Birger Lillehammer, Filip Patocka
		RESPONSIBLE UNIT	Natural Resources, Multiconsult Norge AS

## SUMMARY

This is the fourth monthly progress report of the *Consulting Services for Environmental Flow Assessment (EFA) and Water Quality Modelling within the Lesotho Lowlands Water Development Project Phase II (LLWDP II)*. It covers period from week 18 to week 22 in 2021.

The Consultant issued a nearly final version of the Inception and Scoping report on May 28<sup>th</sup>, 2021 for the last Client's comments. On June 2<sup>nd</sup>, the key Consultant's staff met in a virtual meeting with the Client's representatives and the World Bank staff, presenting the inception report and engaging in a discussion related to it and the following tasks. The Final Inception and Scoping Report was approved by MoW and WB on June 7<sup>th</sup>, and thereafter formally submitted to MoW on June 9<sup>th</sup>.

The Consultants teams large Field trip is now planned for end of August and beginning of September, if Covid restrictions allows for it, and upon approval by MoW.

00	14.06.2021	Monthly Progress Report, May 2021	Leif Lillehammer, Filip Patocka	Leif Lillehammer	Gro Dyrnes
REV.	DATE	DESCRIPTION	EDITED BY	CHECKED BY	APPROVED BY

## TABLE OF CONTENTS

1	Overall status .....	5
2	Main challenges, critical areas and proposal for measures .....	5
3	Health, Safety and Environment .....	5
4	Quality.....	5
5	Risk.....	5
6	Project Activities.....	5
6.1	Meetings / planning .....	6
6.2	Planned field trip .....	6
6.3	Schedule .....	6
7	Interfacing .....	6
8	Organisation and manning.....	6
9	Contract.....	6
9.1	Economy .....	6
9.2	Delivery status .....	6
9.3	Milestones .....	7
10	Disbursements and Invoicing .....	7

## Attachment

Attachment 1 Workplan

Attachment 2 Invoice log

## 1 Overall status

Status for the last 3 reporting periods:

	Week 5-8, 2021		Week 9-13, 2021		This Period	
	Status	Trend	Status	Trend	Status	Trend
Financial						
Time / progress						
Quality						

Colour codes:

- Green** Status – as planned and under control, high probability of goal achievement
- Yellow** Status – a few challenges, some corrective actions needed for goal achievement
- Red** Status – major challenges, needs corrective actions, low probability of goal achievement

## 2 Main challenges, critical areas and proposal for measures

The main challenge for time and progress of the project is the Covid-19 pandemic. The Consultant proposed a contingency plan to outline possible strategies for coping with Covid-19 restriction scenarios. The plan is part of the submitted Draft Inception Report.

## 3 Health, Safety and Environment

Internal procedures for Health, Safety and Environment of the project are in place.

## 4 Quality

Internal quality plan following ISO 9001:2015 has been set up to control quality on the project and will be continuously reviewed against the work being undertaken to assure satisfactory quality is achieved.

## 5 Risk

Internal risk procedures connected to project execution, travelling and site work had been reviewed and are in place. Further risk evaluation will be done prior to each site work period.

## 6 Project Activities

Issue of Inception and Scoping Report on May 28<sup>th</sup>, 2021, incorporating results from the first fieldtrip in late March as well as Clients comments to the Draft Inception Report. Final Inception and Scoping Report was approved by MoW and WB on 7<sup>th</sup> of June after comments in the meeting of June 2<sup>nd</sup> (see below section 6.1). The consultant also received info from the Client about planned water abstraction from the Hlotse river as well as water releases from the Hlotse Adit on June 2<sup>nd</sup>. This will now form a basis for defining the EFlow scenarios. On 4<sup>th</sup> of June the Consultant also received data

on hydrology, water resources data as well as WEAP simulations important input for our hydrological modelling that is currently undertaken.

### **6.1 Meetings / planning**

A meeting was arranged with the Client on 2<sup>nd</sup> June 2021.

### **6.2 Planned field trip**

The first field trip is planned for period from 30<sup>th</sup> of August to 7<sup>th</sup> of September 2021, to coincide properly with the low-flow season that is important for most of the survey topics. The timing of the field trip is also being reviewed based on the corona-imposed restrictions, in Lesotho, South-Africa, the Netherlands and Norway.

### **6.3 Schedule**

The attached work plan had been updated based on the anticipated timing for the first field trip and the associated activities.

## **7 Interfacing**

The Consultant is in contact with the Client's team through the project manager Leif Birger Lillehammer and his administrative assistant Filip Patocka.

## **8 Organisation and manning**

Full team of Multiconsult, Deltares, Southern Waters and Multi-Nodal relevant to the delivery of the ongoing tasks has been successfully mobilised.

## **9 Contract**

### **9.1 Economy**

Payments and budget as planned.

See the Attachment 2 for the Invoice log for details.

### **9.2 Delivery status**

The Final Inception and Scoping report was accepted by MoW and WB on 7<sup>th</sup> of June. This report was then submitted formally on 9<sup>th</sup> June together with invoices for the second payment (see Invoice log in Attachment 2).

The list of deliverables is listed overleaf.

Deliverables	Delivery date - From the commencement of the assignment, after:
Kick-Off Meeting	18 <sup>th</sup> December 2020
Draft Inception Report	5 <sup>th</sup> February 2021
Final Inception and Scoping Report (Approved 7 <sup>th</sup> June)	Early June 2021 (9 <sup>th</sup> ), after incorporating Client's comments to the report.
Regular Progress Reports	Monthly (11 reports). The first on February 10 <sup>th</sup>
Baseline Monitoring Report	9 months
Monitoring and Modelling Report	9 months
Training Manual	9 months
Water Resources and Water Quality Assessment Report	11 months
Hydraulics Report	11 months
EFlows Assessment Report	11 months
DRIFT DSS and Hlotse Database	11 months
Customised Hlotse DRIFT Manual	11 months
EFMP	12 months
Completion Report	12 months

### 9.3 Milestones

The second achieved milestone was delivery and approval of the Final Inception and Scoping Report.

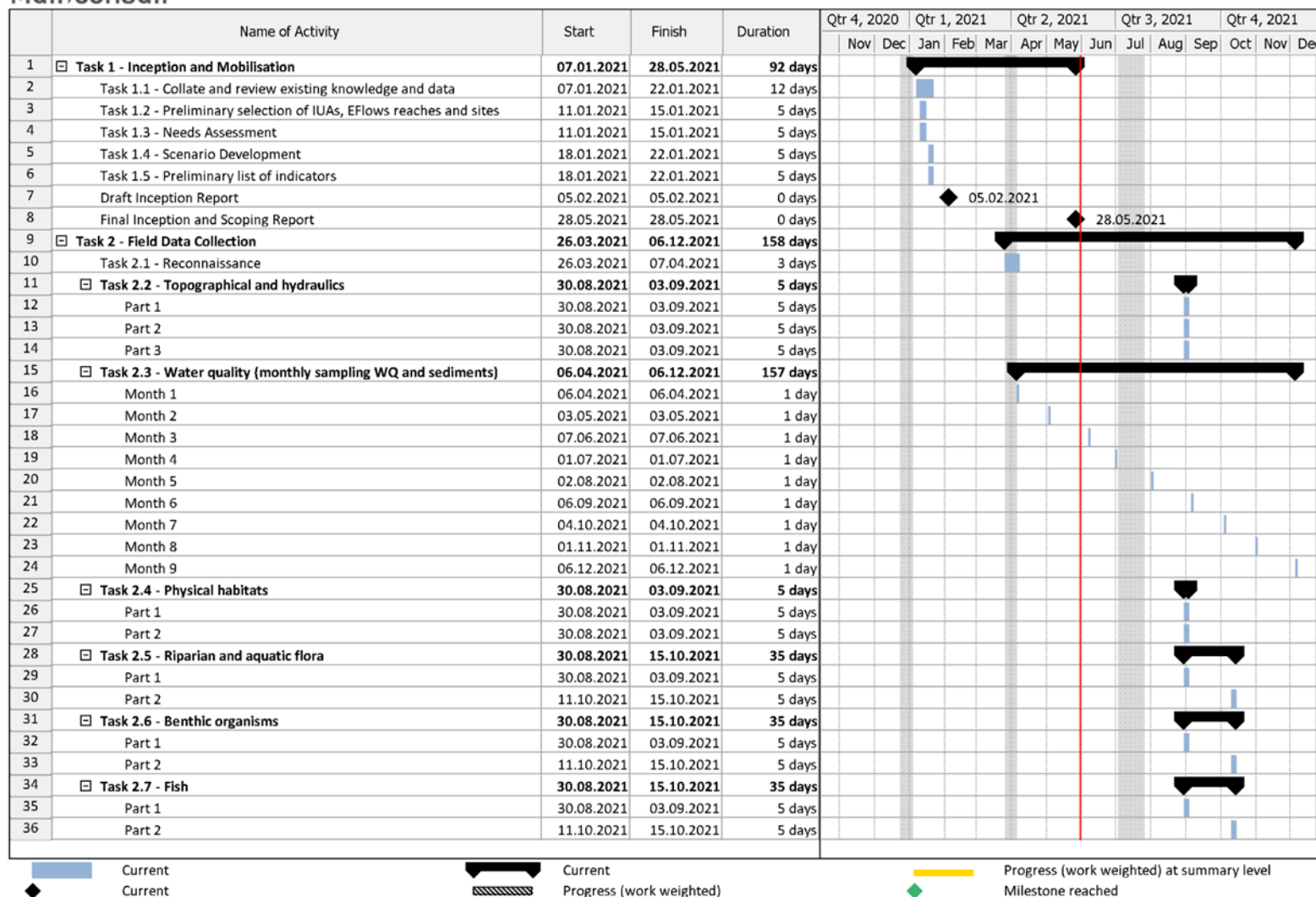
## 10 Disbursements and Invoicing

Within the reporting period, all three advance payment invoices have been paid by the Client

The invoices for the second payment was sent to the Client on June 9<sup>th</sup>.

## Attachment 1 – Workplan

Multiconsult



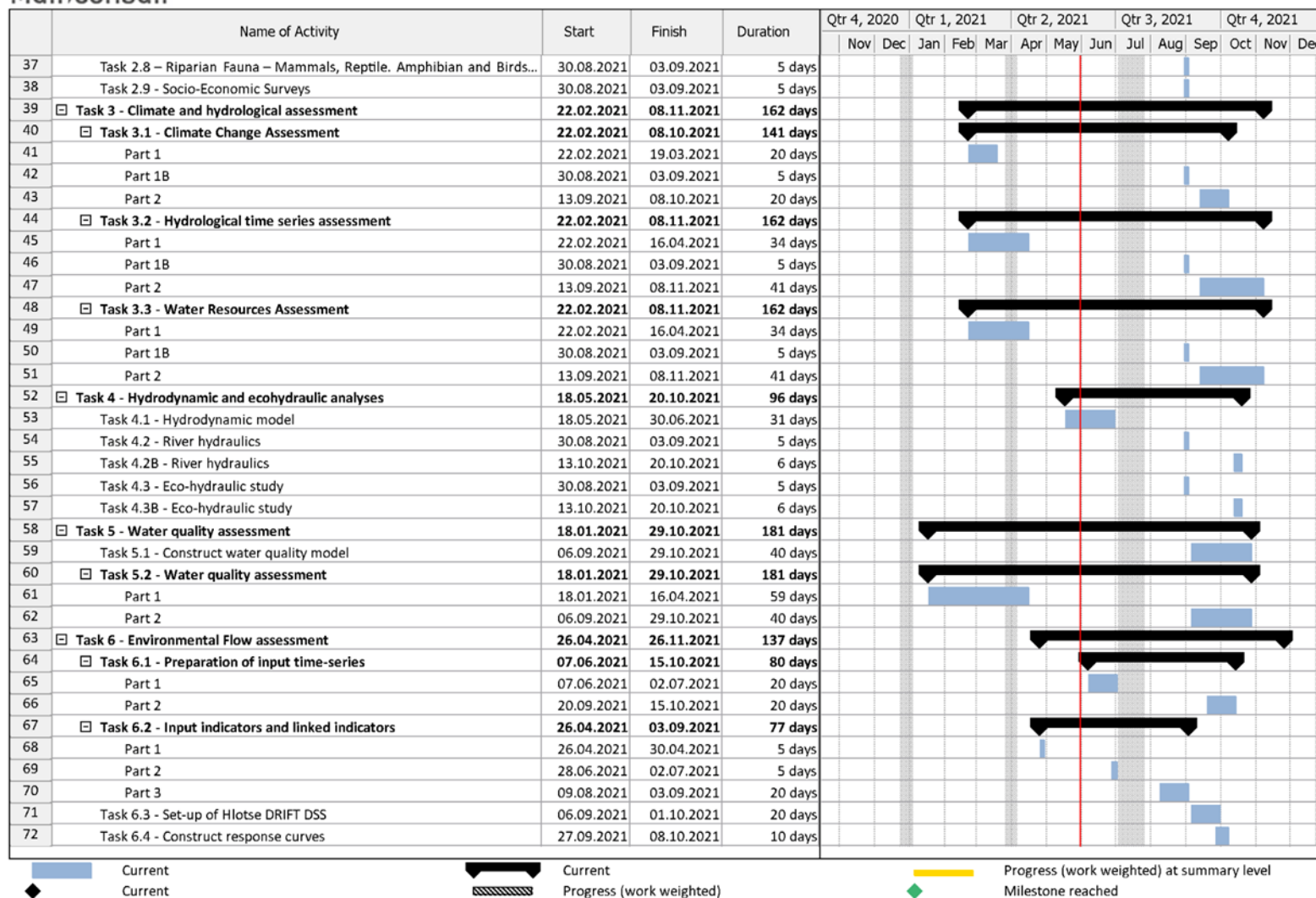
Consulting Services for Environmental Flow Assessment (EFA)  
and Water Quality Modelling within the Lesotho Lowlands  
Water Development Project Phase II (LLWDP II)

Monthly Progress Report

multiconsult.no

Attachment 1- Workplan

Multiconsult



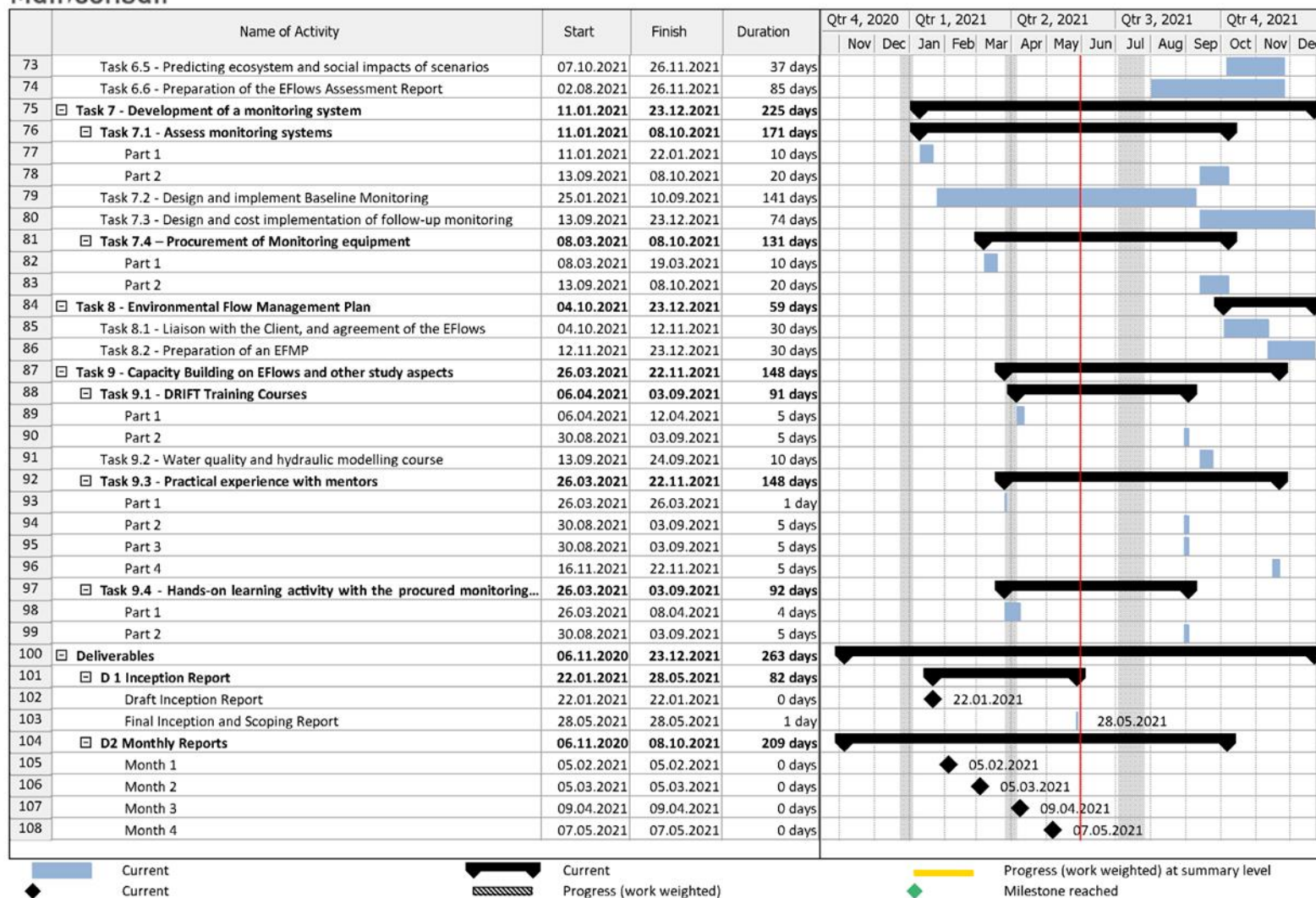
Consulting Services for Environmental Flow Assessment (EFA)  
and Water Quality Modelling within the Lesotho Lowlands  
Water Development Project Phase II (LLWDP II)

Monthly Progress Report

multiconsult.no

Attachment 1- Workplan

Multiconsult



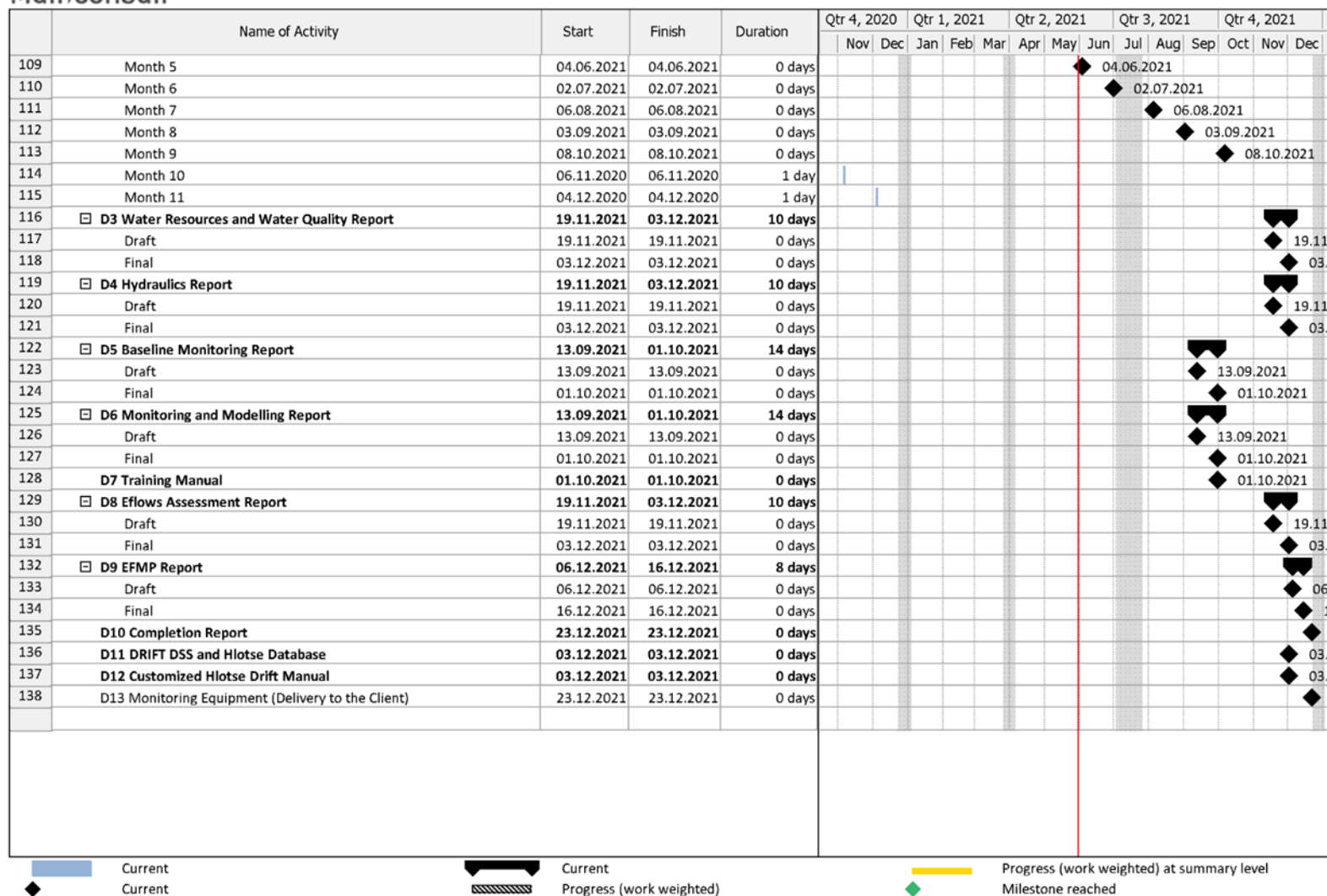
Consulting Services for Environmental Flow Assessment (EFA)  
and Water Quality Modelling within the Lesotho Lowlands  
Water Development Project Phase II (LLWDP II)

Monthly Progress Report

multiconsult.no

Attachment 1- Workplan

Multiconsult



**Consulting Services for Environmental Flow Assessment (EFA)  
and Water Quality Modelling within the Lesotho Lowlands  
Water Development Project Phase II (LLWDP II)**

Monthly Progress Report

multiconsult.no

Attachment 2- Invoice log

## Attachment 2 – Invoice log

Consulting Services for Environmental Flows Assessment and Water Quality Modelling within the Lesotho Lowlands Water Development Project Phase II (LLWDP II)											
NOK Part											
Client	Project No	Invoice No.	Description	Amount	Invoice Date	Due Date	Status	Paid	Received Amount	Outstanding Amount	Comments
Lesotho Lowlands Water Development Project II, Ministry of Water	10223685-01	10552144	Advance Payment	NOK 200,554.00	19.02.2021	05.03.2021	Paid	Yes	NOK 200,554.00	NOK 0.00	
Lesotho Lowlands Water Development Project II, Ministry of Water	10223685-01	10567041	Milestone, Final Inception and Scoping report	NOK 300,831.00	09.06.2021	08.08.2021	Invoiced	No		USD 300,831.00	35% - 5% advance payment repayment Amount shown is for 30% (advance payment repayment deducted)
							-				
			Sum Invoices	NOK 501,385.00					NOK 200,554.00	NOK 300,831.00	
Consulting Services for Environmental Flows Assessment and Water Quality Modelling within the Lesotho Lowlands Water Development Project Phase II (LLWDP II)											
EUR Part											
Client	Project No	Invoice No.	Description	Amount	Invoice Date	Due Date	Status	Paid	Received Amount	Outstanding Amount	Comments
Lesotho Lowlands Water Development Project II, Ministry of Water	10223685-02	10552145	Advance Payment	EUR 20,313.00	19.02.2021	05.03.2021	Paid	Yes	EUR 20,313.00	EUR 0.00	
Lesotho Lowlands Water Development Project II, Ministry of Water	10223685-02	10567042	Milestone, Final Inception and Scoping report	EUR 30,469.00	09.06.2021	08.08.2021	Invoiced	No		EUR 30,469.00	35% - 5% advance payment repayment Amount shown is for 30% (advance payment repayment deducted)
							-				
			Sum Invoices	EUR 50,782.00					EUR 20,313.00	EUR 30,469.00	
Consulting Services for Environmental Flows Assessment and Water Quality Modelling within the Lesotho Lowlands Water Development Project Phase II (LLWDP II)											
USD Part											
Client	Project No	Invoice No.	Description	Amount	Invoice Date	Due Date	Status	Paid	Received Amount	Outstanding Amount	Comments
Lesotho Lowlands Water Development Project II, Ministry of Water	10223685-03	10552146	Advance Payment	USD 82,218.00	19.02.2021	05.03.2021	Active	Yes	USD 81,675.55	USD 542.45	Received as 69 102.37EUR. Exchanged to 81 675,55USD. Invoice was 82,218 USD.
Lesotho Lowlands Water Development Project II, Ministry of Water	10223685-03	10567043	Milestone, Final Inception and Scoping report	USD 123,327.00	09.06.2021	08.08.2021	Invoiced	No		USD 123,327.00	35% - 5% advance payment repayment Amount shown is for 30% (advance payment repayment deducted)
							-				
			Sum Invoices	USD 205,545.00					USD 81,675.55	USD 123,869.45	